



**NewYork-Presbyterian**

The University Hospital of Columbia and Cornell

## ROYAL CHARTER PROPERTIES | REAL ESTATE

### EAST CAMPUS HOUSING



COLEMAN TOWER



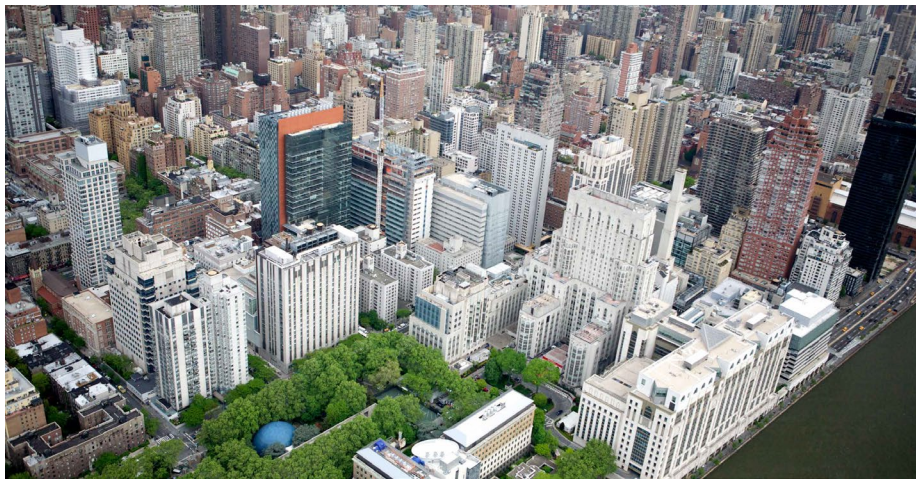
HELMSLEY TOWER



PAYSON HOUSE

## 2021 EAST CAMPUS HOUSING OVERVIEW

Resident House Staff & Clinical Fellows



## Housing Overview

As presently organized under the umbrella of **Royal Charter Properties (RCP)**, each campus has its own management staff responsible for day-to-day housing. The New York Presbyterian East Campus Real Estate Department oversees the residential and commercial properties for the New York-Presbyterian/Weill-Cornell Medicine (68th Street & York Ave.)

**Cushman & Wakefield** is the property management agency for all Royal Charter Property housing.

Royal Charter Properties/New York-Presbyterian Hospital East Campus housing portfolio consists of 1408 apartments within walking distance to the Weill Cornell Campus.

The East Campus has 11 residential apartment buildings on the Upper East Side of Manhattan located from East 70<sup>th</sup> Street and York Avenue to 76<sup>th</sup> Street, between First Avenue and York Avenues. There are 8 mid-rise prewar Walk-up buildings, and 3 elevator high rise buildings.

East Campus apartment sizes range from studios to three bedrooms units.

Eligibility for NYP Housing is contingent upon being a full time NYPH, Weill Cornell or CUIMC employee.

## Contents

Leasing FAQs	3
Payroll Deduction FAQs	4
Rental Rates	5
East Campus Housing Map	6
Building Summaries	7 – 9
Apartment Square Footage	10
Sample Floor Plans	11 – 14
Local Resources	15 – 18
Building Link	19
Housing Application	20

### Our Leasing Team:

*Michele O'Neale*  
Senior Portfolio Coordinator  
Tel: (212) 746-1973  
Email: [mlo9005@nyp.org](mailto:mlo9005@nyp.org)

*Vesna Lopusina*  
Leasing Administrator  
Tel: (212) 746-1968  
Email: [vel9013@nyp.org](mailto:vel9013@nyp.org)

*Gary Quigg*  
Leasing Director  
Tel: (212) 746-1969  
Email: [gmg9001@nyp.org](mailto:gmg9001@nyp.org)



# LEASING OFFICE FREQUENTLY ASKED QUESTIONS:

## 1. Who is eligible for New York Presbyterian Hospital Housing?

- a. Eligibility for NYP Real Estate housing is dependent on being a full-time, salaried employee of New York Presbyterian, Weill Cornell College or Columbia University Medical Center.
- b. East Campus apartment assignment priority is based on the need for that employee to be housed in close proximity to NYP/Weill Cornell in furtherance of its core mission to provide high quality health care services.

## 2. Where are the Hospital Housing locations?

- a. All residential buildings are within close proximity to both NYP/East and NYP/West Campuses.

## 3. Describe the residential buildings?

- a. We have several types of residences within our housing portfolio.
- Our East Campus portfolio is composed of 3 residential High-Rise concierge buildings, as well as several 5 – 6 story walk-up buildings.
- The West Campus portfolio is comprised of 20 Pre-War buildings, including both elevator and walk-ups.

## 4. Do all the buildings have laundry facilities?

- a. The East Campus High-Rise buildings have laundry facilities; however many Walk-up buildings do not.
- b. All buildings on the West Campus have laundry facilities.

## 5. What size apartments do you have within your portfolio?

- a. Apartment sizes vary from studio, one bedroom, two bedroom, three bedroom and four bedroom apartments on both the East and West Campuses.

## 6. What are the rental rates?

- a. Rental rates are provided upon request from the Leasing Office. Rental Rates are subject to change annually.

## 7. How do I apply for housing?

- a. An application is available at East and West Campus Leasing Offices, Monday-Friday, from 9:00AM – 5:00PM. You can also submit your housing application online, please visit our website: [WWW.NYP.ORG/REALESTATE](http://WWW.NYP.ORG/REALESTATE)
- b. Applicant is required to provide documentation as to their employment status prior to being assigned to housing. (I.e.: copy of your hospital ID badge and payroll statement, if applicable your employment offer letter).
- c. Applications expire annually.

## 8. Can I share my apartment with a non-Hospital employee?

- a. Yes. Nevertheless, only the Hospital Employee will be the Licensee and recognized as the legal tenant of record.
- b. NYP Housing does not arrange shared apartment assignments.

## 9. Are the apartments furnished?

- a. All apartments are unfurnished. However kitchen appliances are provided.

## 10. Can I schedule an appointment to view an apartment?

- a. Yes, please contact the Leasing Office to schedule an apartment showing, please note the following contact numbers:
  - East Campus Leasing Office: (212) 746-9096
  - West Campus Leasing Office: (212) 305-2014

E-mail us at: [NYPHOUSING@NYP.ORG](mailto:NYPHOUSING@NYP.ORG)

## 11. Can I move in anytime during the month?

- a. Yes, please confirm your request with the Leasing Office.

## 12. What is the License Agreement term?

- a. All license agreements are for a one year term and automatically renewed annually for an additional one year term.

## 13. What is required to secure an apartment?

- a. Pro-Rated Rent: Prior to possession of your unit, you are required to submit payment for (1) the pro-rated rent due for the days remaining within the calendar month of move-in and (2) the monthly rent for the next full calendar month.

## 14. What funds do I need to provide prior to move in?

- a. Pro-Rated Rent: Prior to possession of your unit, you are required to submit payment for (1) the pro-rated rent due for the days remaining within the calendar month of move-in and (2) the monthly rent for the next full calendar month.
- b. Security Deposit: A security deposit equal to \$100 is required of Graduate Staff employees who are assigned Payson House, Helmsley Medical Tower or Coleman Tower apartments.
- c. **ALL FUNDS MUST BE REMITTED IN UNITED STATES CURRENCY AS SEPARATE CERTIFIED CASHIER'S CHECKS OR MONEY ORDERS.**

## 15. How do I pay my rent?

- a. All NYP/Weill Cornell hospital employees are eligible to enroll in payroll deduction.
- b. CUMC paid employees must be on direct billing due to system compatibility.

## 16. How do I set up my utility accounts?

- a. Resident is responsible to establish all utility accounts such as electricity, cable and internet.
- b. All of our buildings are cable ready with a selection of TV and Internet providers available; the Leasing Office will provide you with the contact information for our concierge service.

## 17. Is there parking available?

- a. Tenants of Coleman Tower, Helmsley Tower, and Payson House have access to monthly storage parking in the Hospital's on-site parking garages for a monthly storage fee.
- b. Please direct all inquiries regarding parking prices and availability to the NYP Parking Office at: [parkingnyp-east@nyp.org](mailto:parkingnyp-east@nyp.org)

# PAYROLL DEDUCTION FAQs:

## 1. Does my rent have to be paid via Payroll Deduction?

- a. No. However, all NYP/Weill Cornell Hospital employees are eligible to enroll in payroll deduction at the time of renting an apartment from Royal Charter Properties.
- b. Columbia University Medical Center paid employees **must** be on direct billing due to system compatibility.

## 2. If I elect Payroll Deduction, how frequently will my payroll be deducted?

- a. Your monthly rent will be deducted on a weekly or biweekly payroll schedule depending upon your employer:
  - i. NYP East Campus: Biweekly rental payroll deductions
  - ii. NYP West Campus: Weekly or Biweekly rental payroll deductions
  - iii. Weill Cornell: Biweekly rental payroll deductions
- b. Residents on biweekly payroll deduction will have installments of 50% of your monthly rent deducted from 24 of 26 pay periods per year.
- c. Residents on weekly payroll deduction will have installments of 25% of your monthly rent deducted from 48 pay periods per year.
- d. There will be suppressed payroll deductions throughout the year, please check your payroll schedule for details. Your payroll schedule can be found on the NYP Infonet.

## 3. Why hasn't my Payroll Deduction started as of yet?

- a. Payroll deduction commences during the succeeding month following your move in date. If you have any further questions, please contact the Leasing Office at (212) 746-9096.

## 4. Will I receive a rental statement?

- a. All NYP employees who elect payroll deduction will not receive rental statements because your rent will automatically be paid in full providing there are sufficient funds available.
- b. However, all electric charges are applied to your rental statement and are **not** payroll deducted. Please remit monthly payments by personal check or money order accordingly.

## 5. Can my electricity charges be paid via Payroll Deduction?

- a. Unfortunately, due to fluctuating usage your electricity charges **cannot** be paid via payroll deduction.

## 6. Why was there a shortfall in my scheduled payroll deduction?

- a. Rent is the last deduction to be made from the resident's payroll. Prior to deducting rent, all other charges or benefits that the resident is obligated to pay are deducted. Since these non-rent charges may fluctuate in amount, the payroll deduction amount may vary.

## 7. What happens if the full amount of monthly rent is not deducted in any given month?

- a. Residents are responsible to review their payroll statement to ensure that the rental deduction has been deducted in full.
- b. If there is a rental shortfall, the resident is responsible to immediately remit payment via check or money order to the Finance Office, located at 435 East 70th Street, Suite 7K, NY, NY 10021. The contact number is: (212) 746-0059.

## 8. What happens if there is a change in my employment status?

- a. Residents must notify the Leasing Office promptly upon any employment status change. (I.e.: You need to take a leave of absence due to personal reasons, you must provide the Leasing Office with documentation of your leave of absence from your department.)

## 9. What rental period is the recent Payroll Deduction covering?

- a. Your payroll schedule reflects which pay period your monthly rental deduction is applied to. To find your payroll schedule, you can visit the Employee's page on the Infonet.
- b. Your Year to Date rental deduction amount reflected on your latest payroll statement shows the total amount of rent deducted.

## 10. Is my payroll deduction pre-tax or post-tax?

- a. All payroll rental deductions are post-tax.

# EAST CAMPUS HOUSING

## MONTHLY RENTAL RANGES FOR NYP GRADUATE STAFF PERSONNEL

NYP Graduate Staff prices are available to Resident House Staff and Clinical Fellows of NYP, WCMC, and CUIMC.



BUILDING:	COLEMAN TOWER	HELMSLEY TOWER	PAYSON HOUSE
STUDIO:	\$2295 - \$2831	\$2263 - \$2459	\$2024 - \$2182
1 BEDROOM:	\$3322 - \$4350	\$3223 - \$3464	\$2924 - \$3131
2 BEDROOM:	\$5366 - \$6550	\$4933 - \$5219	\$3555 - \$3816
3 BEDROOM:	\$8190 - \$9723	\$6665 - \$7080	\$4119 - \$4457



BUILDING:	405/417/421 E. 70 <sup>TH</sup>	423 E. 70 <sup>TH</sup>	437/439 E. 71 <sup>ST</sup>	402 E. 72 <sup>ND</sup>	418 E. 76 <sup>TH</sup>
STUDIO:	\$1775 - \$1725	\$1892 - \$1942	\$1725 - \$1775	\$1781 - \$1831	\$1712
1 BEDROOM:	\$1898 - \$2097	\$2199 - \$2249	\$1995 - \$2045	\$2313 - \$2363	N/A
2 BEDROOM:	\$2303 - \$2353	N/A	\$2425 - \$2500	N/A	N/A

All housing is subject to apartment availability.

Please note the above referenced apartment sizes and corresponding monthly rental rates reflect NYP Real Estate Housing’s current price range. Rental Rates are subject to change annually. If rental rates are adjusted in 2021, new rates will be made immediately available once confirmed by New York Presbyterian Hospital.

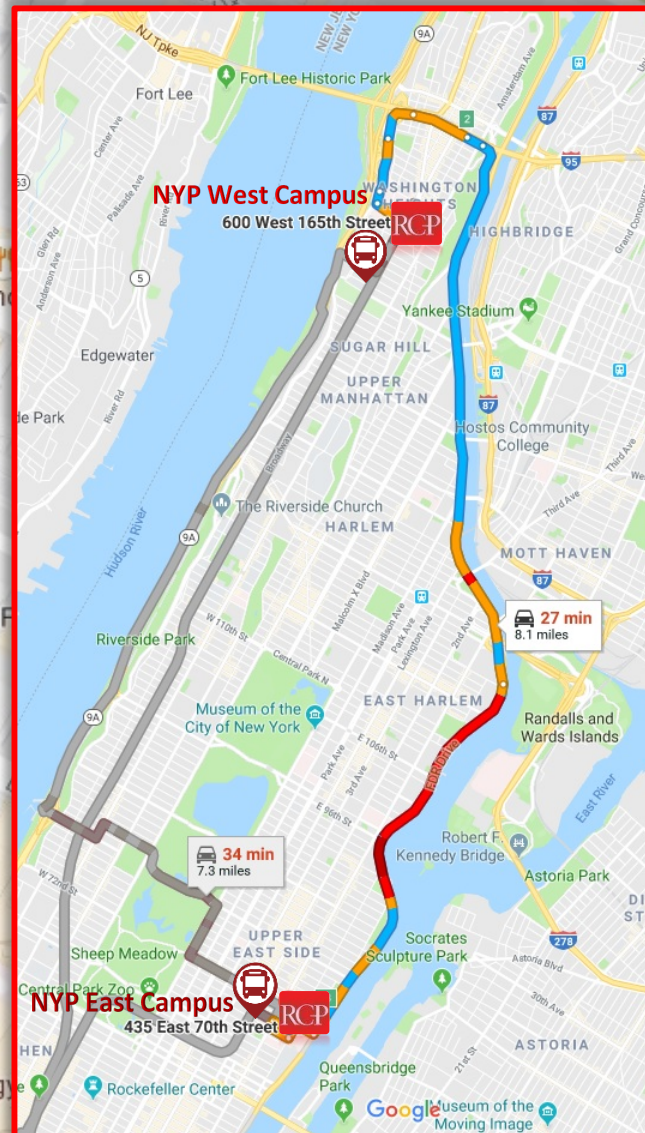
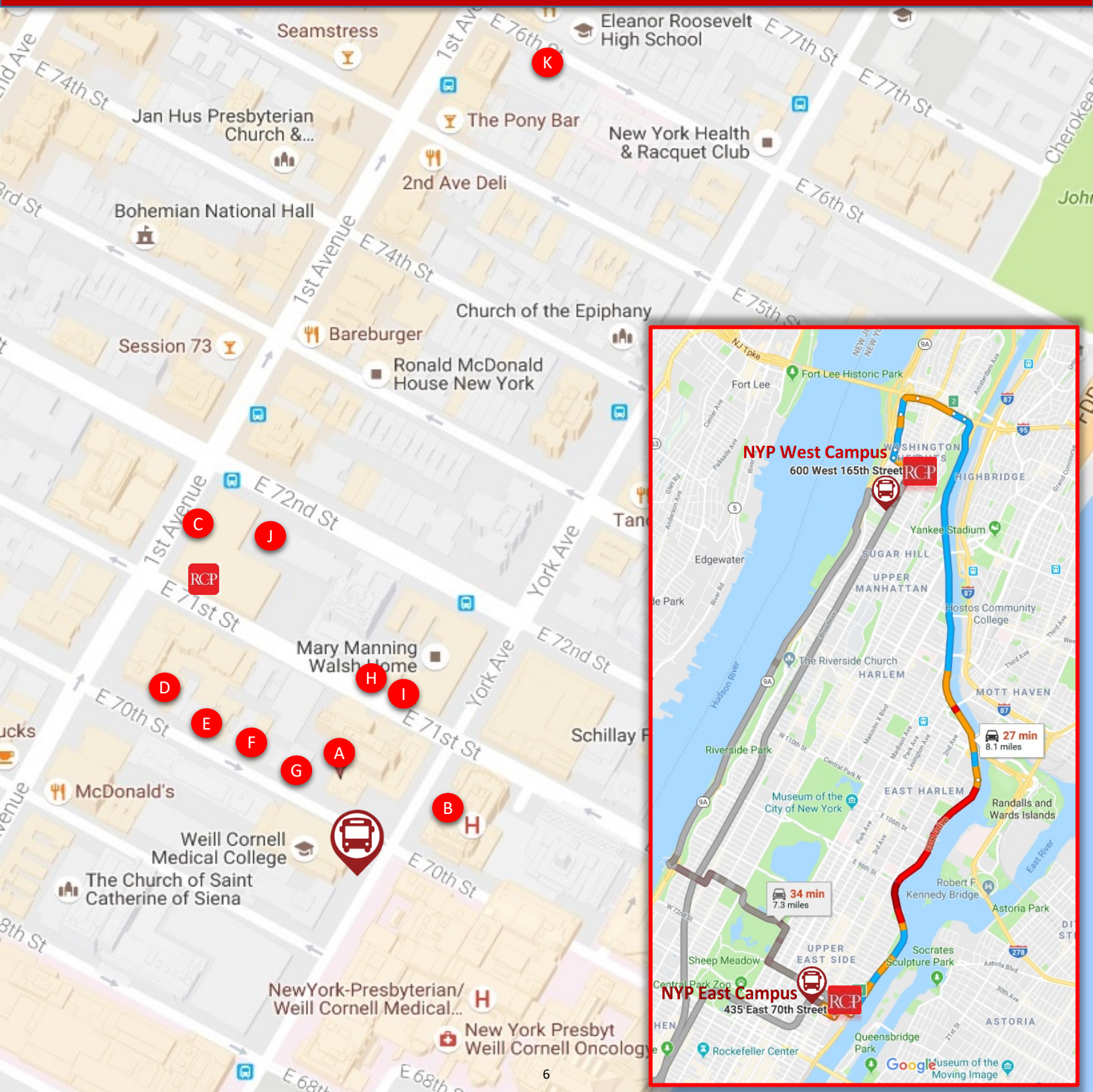


- A. Payson House – 435 East 70<sup>th</sup> Street
- B. Helmsley Medical Tower – 1320 York Avenue
- C. Coleman Tower – 1330 First Avenue
- D. 405 East 70<sup>th</sup> Street
- E. 417 East 70<sup>th</sup> Street
- F. 421 East 70<sup>th</sup> Street
- G. 423 East 70<sup>th</sup> Street
- H. 437 East 71<sup>st</sup> Street

- I. 439 East 71<sup>st</sup> Street
- J. 402 East 72<sup>nd</sup> Street
- K. 418 East 76<sup>th</sup> Street



**NYP Shuttle Bus Service**





## HIGH RISE BUILDINGS

### PAYSON HOUSE: 435 EAST 70<sup>TH</sup> STREET

- Built in 1963
- Located on East 70th Street near York Avenue with easy access to all shopping venues.
- 34 Story Mixed Occupancy Elevator Building (4 elevators).
- Underground accessibility to the Hospital.
- 24 Hour Concierge/Doorman.
- 1<sup>st</sup> - 4<sup>th</sup> Floor – Commercial/Administrative Offices.
- Fitness Room on the 3rd Floor.
- Laundry room on each residential floor (card operated).
- Indoor & Outdoor play area exclusive for Play Area Association members.
- All apartments include: Central Air Conditioning/Heating, kitchen appliances, parquet floors and ceramic tiles, window blinds (microwaves not included).
- Dishwashers in 2 bedroom and 3 bedrooms.
- Resident is only responsible for electric utility charge, which is sub-metered; water and gas are included in the rent.
- The building is wired for cable and high speed internet. Usage is at the discretion and expense of the resident.
- TV Providers: Spectrum, RCN, and Verizon FiOS.



Fitness Room

### HELMSLEY MEDICAL TOWER: 1320 YORK AVENUE

- Built in 1986
- Located on York Avenue between 70th and 71st Streets with easy access to all shopping venues.
- 36 Story Mixed Occupancy Elevator Building (6 elevators).
- Underground accessibility to the Hospital.
- 24 Hour Concierge/Doorman.
- 1<sup>st</sup> - 7<sup>th</sup> Floor – Commercial/Medical Offices.
- 8<sup>th</sup> - 12<sup>th</sup> Floors – Guest Facility which offers visitors accommodations when a loved one require extended medical care or outpatient hospital services.
- 13<sup>th</sup> – 36<sup>th</sup> Floors are Residential.
- Resident fitness room
- Laundry Room located in sub-basement.
- All apartments include: Spacious open layouts, central Air Conditioning/Heating, dishwasher, kitchen appliances, hardwood floors, and window blinds, (microwaves not standard).
- Resident is only responsible for electric utility charge, which is sub-metered; water and gas are included in the rent.
- The building is wired for cable and high speed internet. Usage is at the discretion and expense of the resident.
- TV Providers: Spectrum, RCN, and Verizon FiOS.



Laundry Room

### COLEMAN TOWER: 1330 FIRST AVENUE

- Opened in 2008
- Located on 1st Avenue between 71<sup>st</sup> and 72<sup>nd</sup> Streets with easy access to all shopping venues
- 20 story Fully Residential Elevator Building (4 elevators)
- 100% residential from floor 2 through 20
- 24 hour doorman/concierge
- Fitness room
- Laundry room located on the 5th floor; machines operated by debit card.
- Outdoor courtyard
- Residential lounge
- Bicycle storage room
- 24 hours indoor attended parking garage (space available for additional monthly fee).
- Security cameras located in the common areas throughout the building.
- All apartments include the same finishes: hardwood flooring, granite and marble countertops and bathroom vanities, temperature controls year round in each room, shades for all windows, stainless steel kitchen appliances including: microwave, dishwasher and garbage disposal.
- There are limited apartments (in all sizes) throughout the building that have private, outdoor balconies and decks.
- Resident is only responsible for electric utility charge, which is sub-metered; water and gas which operates the stove are included in the rent.
- The building is wired for cable and high speed internet. Usage is at the discretion and expense of the resident.
- TV Providers: Verizon FiOS, and Spectrum.



Residential Lounge





## PREWAR WALK-UP BUILDINGS



### 405 EAST 70<sup>TH</sup> STREET

- 5 story walk up building
- Located between York and 1st Avenue with easy access to all shopping venues.
- 2 commercial stores on street level.
- Laundry room located in the basement; machines operated by debit card.
- Resident is responsible for electric utility charge and gas which operates the stove, in addition to rent.
- Residents must contact Con Edison on the day of their move in to activate their utility account (800) 752-6633.
- The building is wired for cable and high speed internet. Usage is at the discretion and expense of the resident.
- TV Providers: Spectrum, and Verizon FiOS.



### 417 EAST 70<sup>TH</sup> STREET

- 6 story walk up building
- Located between York and 1st Avenue with easy access to all shopping venues.
- 2 commercial stores on street level
- Resident is responsible for electric utility charge and gas which operates the stove, in addition to rent.
- Residents must contact Con Edison on the day of their move in to activate their utility account (800) 752-6633.
- The building is wired for cable and high speed internet. Usage is at the discretion and expense of the resident.
- TV Providers: Spectrum, and Verizon FiOS.



### 421 EAST 70<sup>TH</sup> STREET

- 5 story walk up building
- Located between York and 1st Avenue with easy access to all shopping venues
- Hospital affiliate office located in basement.
- Residential apartments: 10 (all one bedrooms).
- All apartments run are "railroad" style and have both southern and northern exposure.
- Resident is responsible for electric utility charge and gas which operates the stove, in addition to rent.
- Residents must contact Con Edison on the day of their move in to activate their utility account (800) 752-6633.
- The building is wired for cable and high speed internet. Usage is at the discretion and expense of the resident.
- TV Providers: Spectrum, and Verizon FiOS.



### 437 EAST 71<sup>ST</sup> STREET

- 5 story walkup building
- Located between York and 1st Avenue with easy access to all shopping venues.
- Resident is responsible for electric utility charge and gas which operates the stove, in addition to rent.
- Residents must contact Con Edison on the day of their move in to activate their utility account (800) 752-6633.
- The building is wired for cable and high speed internet. Usage is at the discretion and expense of the resident.
- TV Providers: Spectrum, and Verizon FiOS.



### 439 EAST 71<sup>ST</sup> STREET

- 6 story walkup building
- Hospital Affiliate office occupies 1st floor
- Located between York and 1st Avenue with easy access to all shopping venues.
- Resident is responsible for electric utility charge and gas which operates the stove, in addition to rent.
- Residents must contact Con Edison on the day of their move in to activate their utility account (800) 752-6633.
- The building is wired for cable and high speed internet. Usage is at the discretion and expense of the resident.
- TV Providers: Spectrum, and Verizon FiOS.



### 402 EAST 72<sup>ND</sup> STREET

- 5 story walkup building
- Located between 1<sup>st</sup> and York Avenue with easy access to all shopping venues.
- Some apartments have air conditioning unit installed.
- Laundry room located in basement; machines operated by debit card.
- Resident is responsible for electric utility charge and gas which operates the stove, in addition to rent.
- Residents must contact Con Edison on the day of their move in to activate their utility account (800) 752-6633.
- The building is wired for cable and high speed internet. Usage is at the discretion and expense of the resident.
- TV Providers: Spectrum, and Verizon FiOS.





## PREWAR WALK-UP BUILDINGS CONT'D



### 418 EAST 76<sup>TH</sup> STREET

- 6 story walkup building (Studios Only)
- Located between York and 1st Avenue with easy access to all shopping venues.
- Hospital Affiliate offices/on call rooms: 1st to 3rd fl.
- Some apartments have air conditioning unit installed.
- Resident is responsible for electric utility charge and gas which operates the stove, in addition to rent.
- Residents must contact Con Edison on the day of their move in to activate their utility account (800) 752-6633.
- The building is wired for cable and high speed internet. Usage is at the discretion and expense of the resident.
- TV Providers: Spectrum

## PREWAR ELEVATOR BUILDING



### 423 EAST 70<sup>TH</sup> STREET

- 5 story elevator building (1 Elevator)
- Located between York and 1st Avenue with easy access to all shopping venues.
- Laundry room located in basement; machines operated by debit card.
- Resident is responsible for electric utility charge and gas which operates the stove, in addition to rent.
- Residents must contact Con Edison on the day of their move in to activate their utility account (800) 752-6633.
- The building is wired for cable and high speed internet. Usage is at the discretion and expense of the resident.
- TV Providers: Spectrum, and Verizon FiOS.

## UTILITIES:

Tenants of Coleman Tower, Helmsley Medical Tower and Payson House are NOT required to contact the utility company to set up an account. The electricity is sub-metered thru the Hospital, and tenants will receive a monthly statement calculating the amount due for electricity usage. Payson, Helmsley, and Coleman tenants pay electric usage for air conditioning and heating units (this amount must be paid by personal check or money order, and cannot be payroll deducted each month). Tenants of Payson, Helmsley, and Coleman do not pay a separate charge for water and cooking gas – They are included in the rent. Tenants of the Walk-up Buildings, and 423 East 70th Street do not pay a separate charge for water or heat. However, are responsible for their electricity and cooking gas usage which is metered by Con Edison.

## HEAT AND AIR CONDITION:

Payson House, Helmsley Medical Tower, and Coleman Tower apartments have central air-conditioning/heating systems within their apartments which is part of your electricity usage. Air conditioners are not standardly provided in our prewar walk-up buildings. Walk-up Buildings tenants must purchase, and have a licensed contractor install a window unit(s). Walk-up buildings have radiant heating systems which warms the apartment.

## LAUNDRY FACILITIES:

Laundry rooms are located in Payson House on every floor; Helmsley Medical Tower: sub-basement and is open daily 24 hours a day. Coleman Tower laundry room is located in the 5th Floor and is open from 6am to 10pm. Residents of 405 East 70th Street, 423 East 70th Street, and 402 East 72nd Street: Laundry machines are located in the basement and are open daily 24 hours a day. Machines are operated by the use of a laundry card, which can be purchased at the card dispensing machine. Laundry facilities are available for use only by tenants living in that building.

## FITNESS CENTER (Payson House, Helmsley Medical Tower, Coleman Tower):

The Fitness Centers are open seven days a week from 6am to 10pm. The facilities are available for use only by tenants living in that building. No one under 18 is permitted in the Fitness Center at any time, even if accompanied by a parent or an adult. Access to the Fitness Center is controlled by the Management Company and is monitored by a security camera at all times. The Fitness Center is unattended and is used at the sole responsibility of the tenant.

## SMOKING:

Smoking (including e-cigarettes) is prohibited in all indoor and outdoor areas of all our buildings, including without limitation within residential units, the lobby, elevators, hallways, laundry rooms, storerooms, courtyards, rooftops, balconies and patios.



## Square Footage By East Campus Building Type:

PREWAR WALKUPS	
Size of Apartment	Square Footage
Studio/ 1 Bathroom	Approx. 325 – 425 sq. ft.
1 Bedroom/ 1 Bathroom	Approx. 390 – 500 sq. ft.
2 Bedrooms (Junior 4)/ 1 Bathroom	Approx. 460 – 485 sq. ft.

PAYSON HOUSE	
Size of Apartment	Square Footage
Studio/ 1 Bathroom	Approx. 390 sq. ft.
1 Bedroom/ 1 Bathroom	Approx. 620 sq. ft.
2 Bedrooms/ 1 Bathroom	Approx. 850 sq. ft.
3 Bedrooms/ 2 Bathrooms	Approx. 975 sq. ft.

HELMSLEY TOWER	
Size of Apartment	Square Footage
Studio/ 1 Bathroom	Approx. 405 – 415 sq. ft.
1 Bedroom/ 1 Bathroom	Approx. 660 sq. ft.
2 Bedrooms/ 2 Bathrooms	Approx. 1015 sq. ft.
3 Bedroom/ 3 Bathrooms	Approx. 1275 sq. ft.

COLEMAN TOWER	
Size of Apartment	Square Footage
Studio/ 1 Bathroom	Approx. 408 – 535 sq. ft.
1 Bedroom/ 1 Bathroom	Approx. 602 – 706 sq. ft.
2 Bedrooms/ 2 Bathrooms	Approx. 895 – 1129 sq. ft.
3 Bedroom/ 3 Bathrooms	Approx. 1283 – 2197 sq. ft.





# NYP High Rise Sample Floor Plans

In order to assist you in your planning process, the following pages provide a sample of the some of the Payson House, Helmsley Tower, and Coleman Tower apartment size layouts which are most typical, when apartments are available:

 Studio

 One Bedroom

 Two Bedroom

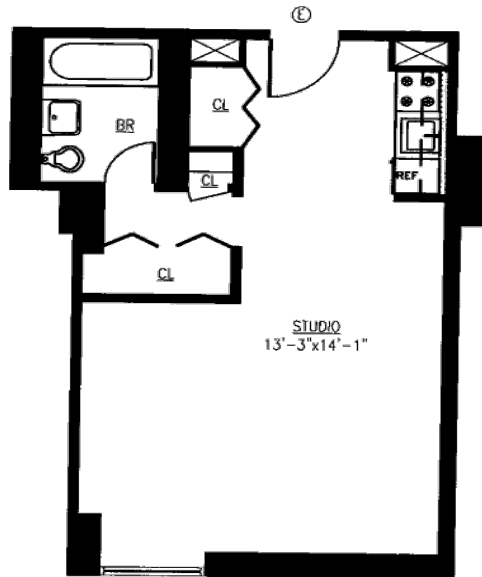
 Three Bedroom



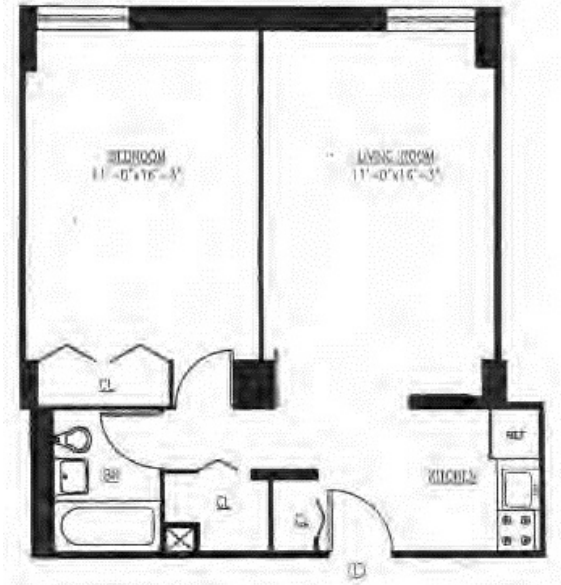
# Payson House

## 435 East 70<sup>th</sup> Street

### STUDIO UNIT



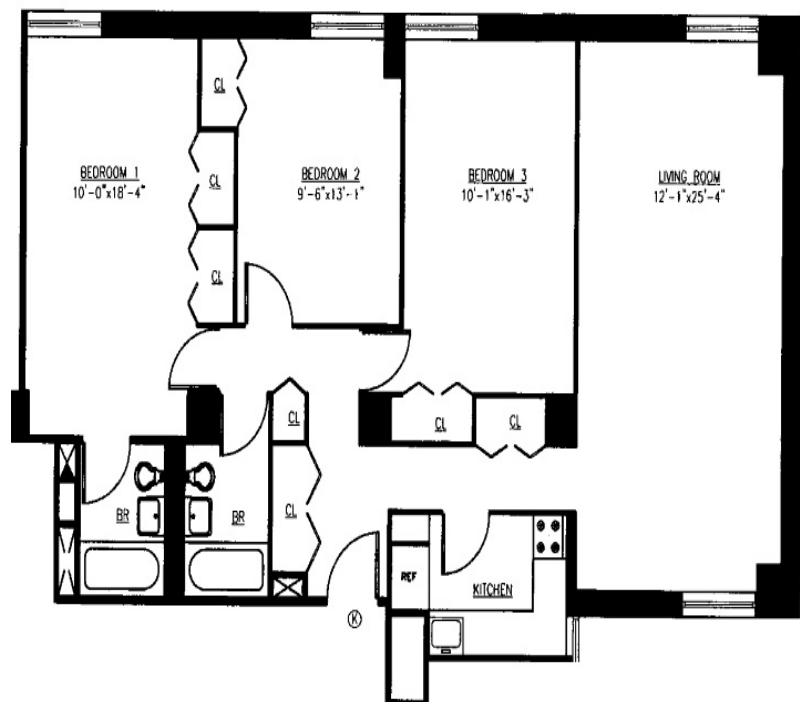
### ONE BEDROOM UNIT



### TWO BEDROOM UNIT



### THREE BEDROOM UNIT



All New York Presbyterian Housing options are subject to apartment availability.

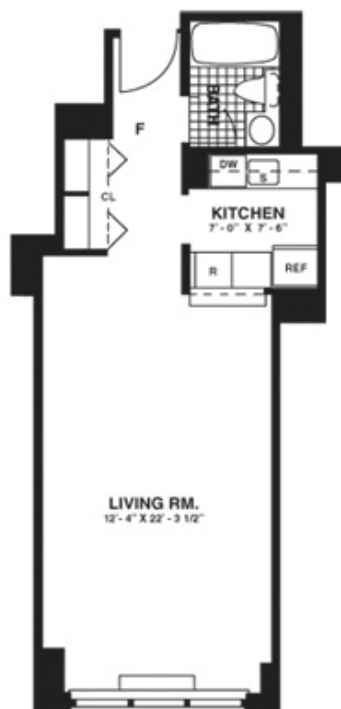




# Helmsley Medical Tower

## 1320 York Avenue

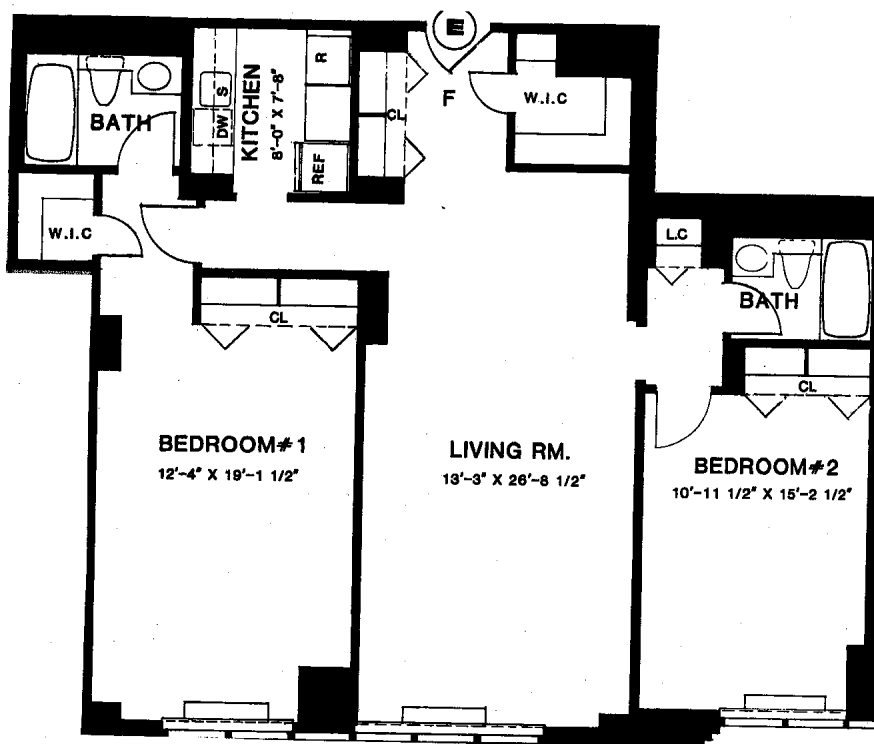
### STUDIO UNIT



### ONE BEDROOM UNIT



### TWO BEDROOM UNIT

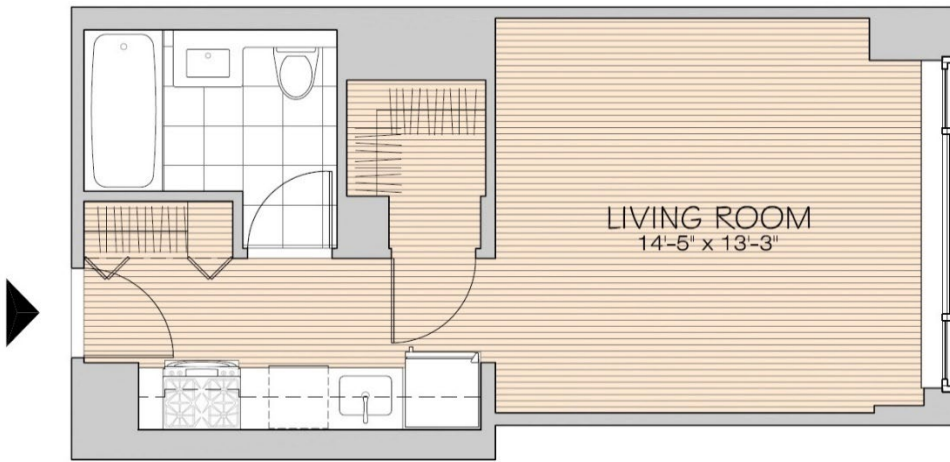


All New York Presbyterian Housing options are subject to apartment availability.

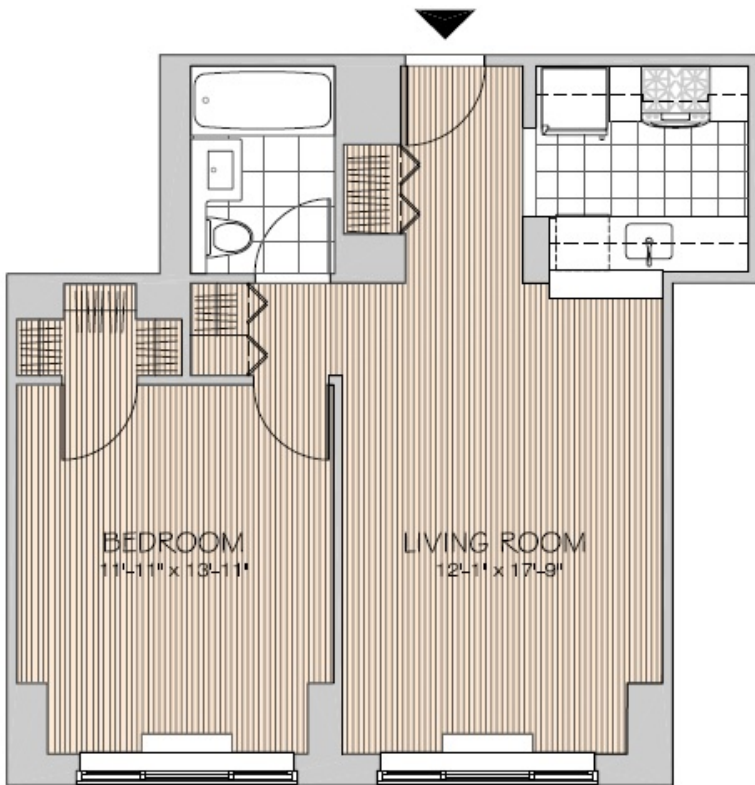


# Coleman Tower

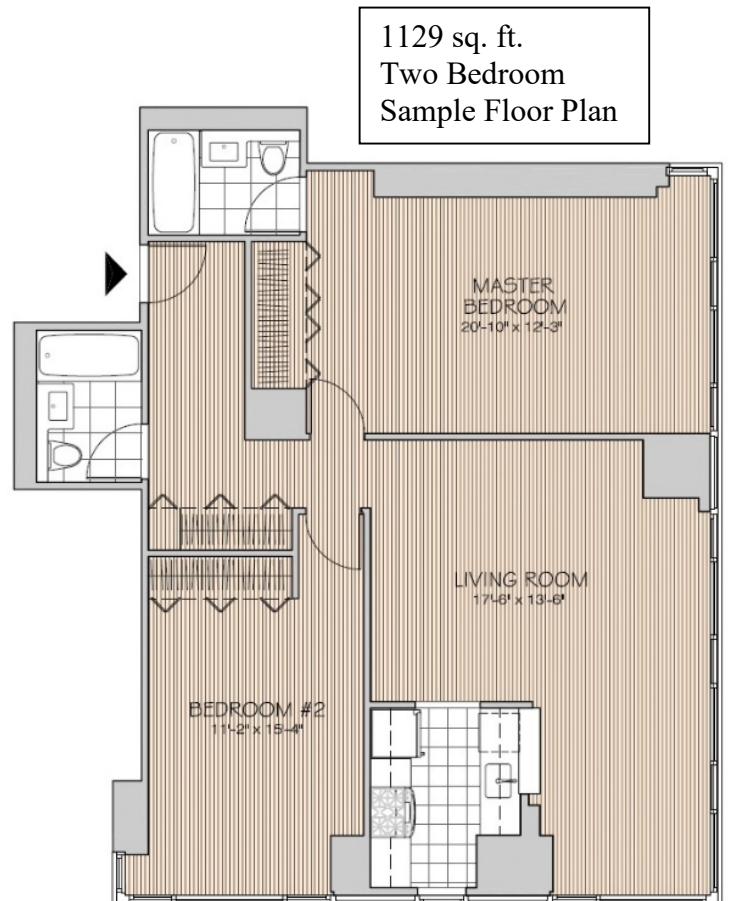
## 1330 First Avenue



421 sq. ft.  
Studio  
Sample Floor Plan



643 sq. ft.  
One Bedroom  
Sample Floor Plan



1129 sq. ft.  
Two Bedroom  
Sample Floor Plan

**COLEMAN TOWER APARTMENT LAYOUTS WILL DIFFER BY SQUARE FOOTAGE.  
THE ABOVE LAYOUTS ARE MOST TYPICAL, AND ARE FOR SAMPLE PURPOSES ONLY.**





## Local Amenities and Resources



**New York City Police Department  
19th Precinct**  
153 East 67<sup>th</sup> Street  
New York, NY 10067  
(212) 452-0600



**FDNY- Engine 39/Ladder 16**  
157 East 67<sup>th</sup> Street  
New York, NY 10067

***Call 911 for emergency  
Call 311 for all other non-emergency services***



**New York  
Public  
Library**

**New York Public Library**  
328 East 67<sup>th</sup> Street  
New York, NY 10065  
(212) 734-1717



**Citi Bike Stations**  
72<sup>nd</sup> Street & York Avenue  
72<sup>nd</sup> Street & 2<sup>nd</sup> Avenue  
68<sup>th</sup> Street & 1<sup>st</sup> Avenue  
[www.citibikenyc.com](http://www.citibikenyc.com)



Metropolitan  
Transportation  
Authority



**Subway Stations Near By:**

2<sup>nd</sup> Avenue/72<sup>nd</sup> Street



68<sup>th</sup> Street – Hunter College  
77<sup>th</sup> Street (77<sup>th</sup> St. & Lexington Ave.)

[www.mta.info](http://www.mta.info)



**NYP Shuttle Bus Services**

Pick-up / Departure location:  
NYP/WC Campus - 1300 York Avenue

*Visit the NYP Infonet for departure times*



**Morton Williams**  
Supermarket at 1565 1<sup>st</sup> Ave.  
(between 71<sup>st</sup> & 72<sup>nd</sup>)  
(212) 794-8866



**Gristedes**  
at 1208 1<sup>st</sup> Ave.  
(between 65<sup>th</sup> & 66<sup>th</sup>)  
(212) 535-2047



**USPS Post Office**  
(Lenox Hill Station)  
at 217 E 70<sup>th</sup> Street  
(between 2<sup>nd</sup> & 3<sup>rd</sup> Ave.)  
(212) 879-4401



**FedEx Store at 1200 3<sup>rd</sup> Ave.**  
(between 69<sup>th</sup> & 70<sup>th</sup> St.)  
(212) 452-0142



**UPS Store at 1397 2<sup>nd</sup> Ave.**  
(between 72<sup>nd</sup> & 73<sup>rd</sup> St.)  
(212) 585-4195



**Duane Reade at 1352 1<sup>st</sup> Ave.**

(212) 535-9816

**CVS at 1396 2<sup>nd</sup> Ave.**

(212) 249-5062

**Walgreens at 1328 2<sup>nd</sup> Ave.**

(212) 734-6076



**Bank of American at 1330 1<sup>st</sup> Ave.**

(between 71<sup>st</sup> & 72<sup>nd</sup>)

**Citibank at 1330 1<sup>st</sup> Ave.**

(between 71<sup>st</sup> & 72<sup>nd</sup>)

**Chase at 1324 York Ave.**

(between 70<sup>th</sup> & 71<sup>st</sup>)

**TD Bank at 1240 1<sup>st</sup> Ave.**

(between 66<sup>th</sup> & 67<sup>th</sup>)



**Symphony Cleaners at 1304 1<sup>st</sup> Ave.**

(212) 988-1220

**One Stop DO ALL Laundromat at**

318 East 70th St. (212) 517-7861

**Capri Laundromat at 343 East 66<sup>th</sup>**

St. (212) 628-2323



**Manhattan Mini Storage at 420 E.**

62<sup>nd</sup> St. (917) 746-7749

**Cube Smart Self Storage at 444 West**

55<sup>th</sup> St. (917) 746-0621

**Manhattan Mini Storage at 401 E.**

110<sup>th</sup> St. (917) 746-0705



**Verizon Wireless at 1314 1<sup>st</sup> Ave.**

(212) 737-4700



**T-Mobile at 1245 3<sup>rd</sup> Ave.**

(212) 861-1984



**AT&T at 1103 3<sup>rd</sup> Ave.**

(212) 319-3685



City of New York  
Parks & Recreation

**St. Catherine's Park at 1245 1<sup>st</sup> Ave**

(btw 67<sup>th</sup> & 68<sup>th</sup>)

**John Jay Park at E. 76<sup>th</sup> to 78<sup>th</sup> St. FDR Drive**

**Central Park** <http://www.centralparknyc.org>



**Pret @ 1320 York Ave. (212) 585-4031**

**Food Mart Deli @ 1321 York Ave. (212) 737-8203**

**Murphy's Law @ 417 E. 70<sup>th</sup> St. (212) 628-3724**

**Dunkin Donuts @ 411 E. 70<sup>th</sup> St.**

**Matsu Sushi @ 411 E. 70<sup>th</sup> Street. (212) 744-4447**

**Just Salad @ 1306 1<sup>st</sup> Ave. (212) 772-7722**

**Chipotle Mexican Grill @ 1288 1<sup>st</sup> Ave. (646) 213-9431**

**McDonald's @ 1286 1<sup>st</sup> Ave. (212) 249-3551**

**Texas Rotisserie & Grill @ 1315 1<sup>st</sup> Ave. (212) 396-0700**

**Café Luka @ 1316 1<sup>st</sup> Ave. (212) 585-2205**

**Dig Inn @ 1319 1<sup>st</sup> Ave. (646) 905-2184**

**Sweetgreen @ 1321 1<sup>st</sup> Ave. (646) 585-0900**

**Lenwich @ 1269 1<sup>st</sup> Ave. (212) 288-0852**

**Patsy's Pizzeria @ 1279 1<sup>st</sup> Ave. (212) 639-1000**

**Le Pain Quotiden @ 1270 1<sup>st</sup> Ave. (212) 988-5001**

**Sophie's Cuban Cuisine @ 401 E. 68<sup>th</sup> St. (212) 439-1814**

**Padoca Bakery @ 359 E. 68<sup>th</sup> St. (212) 300-4543**



## Zoned Schools

### [P.S. 183 Robert L. Stevenson \(M183\)](#)

419 EAST 66 STREET, Manhattan, NY 10065

(212) 734-7719

Grades: 0K, 01, 02, 03, 04, 05, SE

District: 02

Distance: 0.25mi

### [J.H.S. 167 Robert F. Wagner \(M167\)](#)

220 EAST 76 STREET, Manhattan, NY 10021

(212) 535-8610

Grades: 06, 07, 08, SE

District: 02

Distance: 0.54mi

### [Art and Design High School \(M630\)](#)

1075 SECOND AVENUE, Manhattan, NY 10022

(212) 752-4340

Grades: 09, 10, 11, 12, SE

District: 02

Distance: 0.9mi

### [East Side Elementary School, PS 267 \(M267\)](#)

213 EAST 63RD STREET, Manhattan, NY 10065

212-888-7848

Grades: 0K, 01, 02, 03, 04, 05, SE

District: 02

Distance: 0.57mi

### [Eleanor Roosevelt High School \(M416\)](#)

411 EAST 76 STREET, Manhattan, NY 10021

(212) 772-1220

Grades: 09, 10, 11, 12

District: 02

Distance: 0.42mi

### [Ella Baker School \(M225\)](#)

317 EAST 67 STREET, Manhattan, NY 10065

(212) 717-8809

Grades: PK, 0K, 01, 02, 03, 04, 05, 06, 07, 08

District: 02

Distance: 0.25mi





[Lenox Hill Neighborhood House \(MAMQ\)](#)

331 EAST 70 STREET, Manhattan, NY 10021  
212-744-5022  
Grades: PK  
District: 02  
Distance: 0.16mi

[P.S. 059 Beekman Hill International \(M059\)](#)

231-249 EAST 56 STREET, Manhattan, NY 10019  
212-888-7870  
Grades: PK, OK, 01, 02, 03, 04, 05, SE  
District: 02  
Distance: 0.92mi

[P.S./I.S. 217 Roosevelt Island \(M217\)](#)

645 MAIN STREET, Manhattan, NY 10044  
212-980-0294  
Grades: PK, OK, 01, 02, 03, 04, 05, 06, 07, 08, SE  
District: 02  
Distance: 0.57mi

[Talent Unlimited High School \(M519\)](#)

**Julia Richman Educational Campus**  
317 EAST 67 STREET, Manhattan, NY 10065  
(212) 737-1530  
Grades: 09, 10, 11, 12  
District: 02  
Distance: 0.26mi

[Vanguard High School \(M449\)](#)

**Julia Richman Educational Campus**  
317 EAST 67 STREET, Manhattan, NY 10065  
(212) 517-5175  
Grades: 09, 10, 11, 12, SE  
District: 02  
Distance: 0.26mi

[Manhattan International High School \(M459\)](#)

**Julia Richman Educational Campus**  
317 EAST 67 STREET, Manhattan, NY 10065  
(212) 517-6728  
Grades: 09, 10, 11, 12  
District: 02  
Distance: 0.27mi

[P.S. 158 Bayard Taylor \(M158\)](#)

1458 YORK AVENUE, Manhattan, NY 10075  
(212) 744-6562  
Grades: PK, OK, 01, 02, 03, 04, 05, SE  
District: 02  
Distance: 0.53mi

[P.S. 290 Manhattan New School \(M290\)](#)

311 EAST 82 STREET, Manhattan, NY 10028  
(212) 734-7127  
Grades: OK, 01, 02, 03, 04, 05, SE  
District: 02  
Distance: 0.85mi

[Urban Academy Laboratory High School \(M565\)](#)

317 EAST 67 STREET, Manhattan, NY 10065  
(212) 570-5284  
Grades: 09, 10, 11, 12  
District: 02  
Distance: 0.25mi

[Yorkville East Middle School \(M177\)](#)

1458 YORK AVENUE, Manhattan, NY 10075  
917-432-5413  
Grades: 06, 07, 08, SE  
District: 02  
Distance: 0.51mi



## ***Connect to your building... Online!***

BuildingLink is an internet based platform available to the tenants of New York Presbyterian Hospital housing.

### **Through this web service, you can:**

- ✓ Have 2-Way communication with Building personnel
- ✓ Submit, and track maintenance requests
- ✓ Add or update your contact information
- ✓ Read important alerts about your building
- ✓ Register your pet
- ✓ Receive notices when you have packages for you in the package room (*high rises only*)



**Your Username & Password will be provided to you on your move in date.**

